

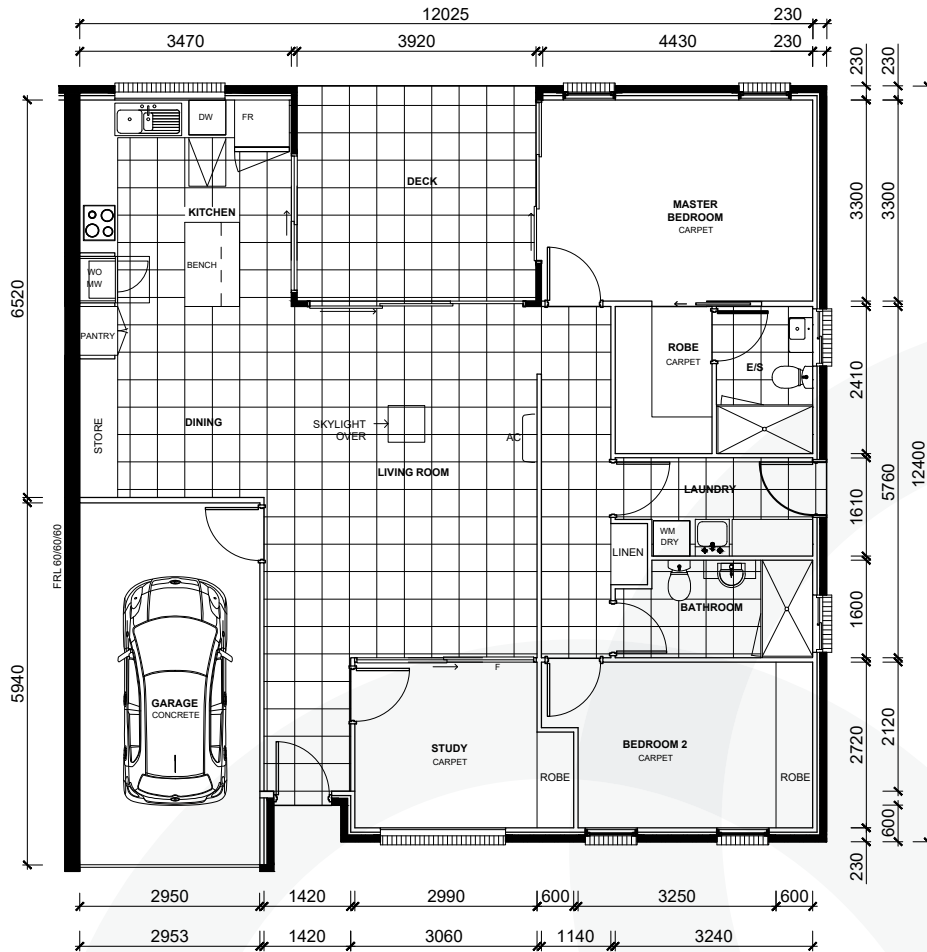
# IRT WOODLANDS

Join Our Community

**134 478**

[irtwoodlands.org.au](http://irtwoodlands.org.au)





## Overview

Size 141 sqm  
 Bedrooms 2 + study  
 Bathrooms 2  
 Garage 1

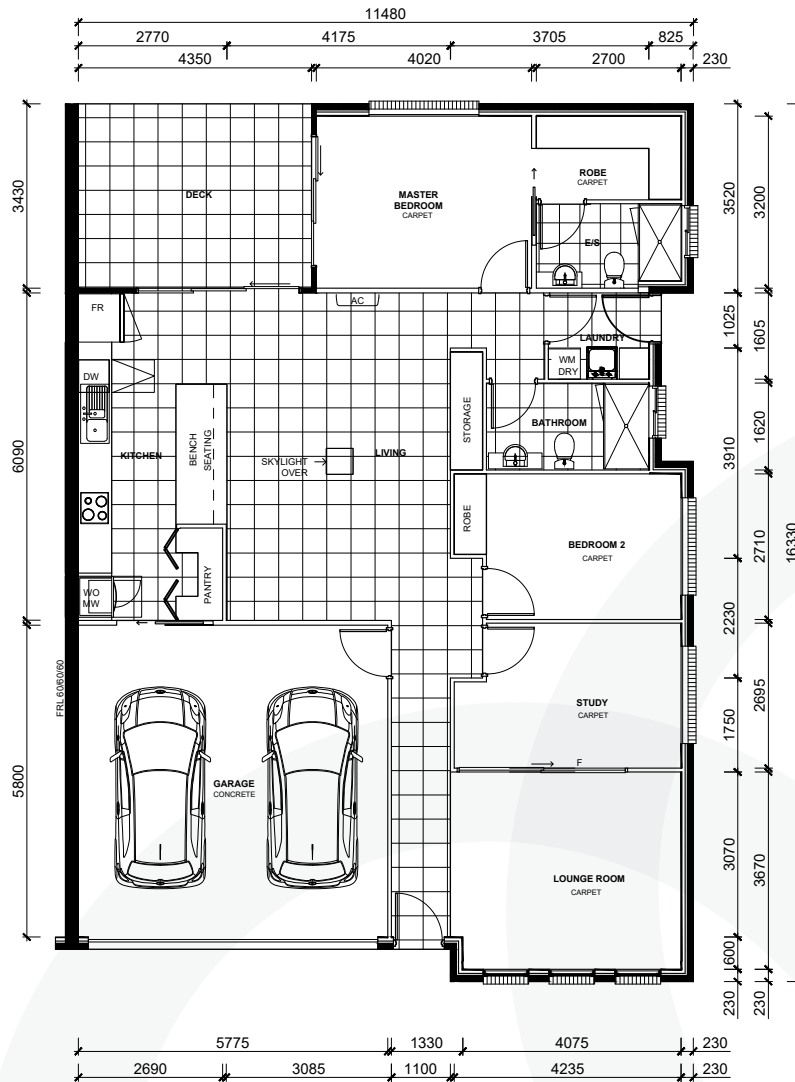
## Bottlebrush features

Architecturally designed with large open spaces, promoting natural ventilation and sunlight to all areas.

- Front entry patio with landscaped garden
- Well appointed living / dining area
- Modern stone bench kitchen equipped with a pantry, hotplates and oven
- Superior door hardware
- Quality tiling to wet areas, tap fittings and splashback
- Large covered alfresco dining overlooking private garden
- Large master bedroom with walk-in robe and private ensuite
- Second bedroom large enough to have friends and family come and stay
- Great sized study with storage
- Ample storage
- Ceiling fans in all bedrooms
- Reverse cycle air conditioning in living / dining area
- Remote-controlled garage with direct villa access
- Flexible use of space
- 2400mm high glazed doors to alfresco dining
- 2700mm high ceilings

Disclaimer: The drawings are not to scale. Illustrations are intended to be a visual aid only and do not necessarily depict the actual dwellings including position or type. Some design and construction elements are still to be finalised and therefore may be subject to change. The detail contained in this drawing is to the best of IRT's knowledge as at 04/12/2018 and is indicative only.





## Overview

Size 168 sqm  
Bedrooms 2 + study  
Bathrooms 2  
Garage 2

## Brigalow features

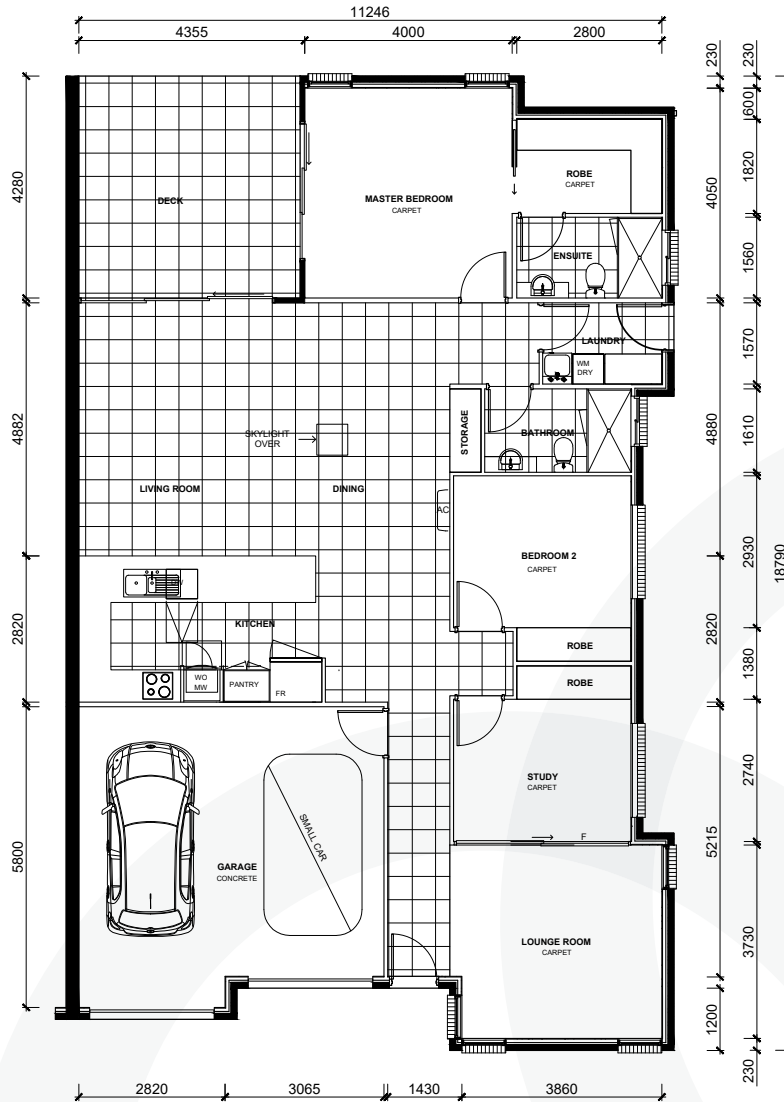
Architecturally designed with large open spaces, promoting natural ventilation and sunlight to all areas.

- Front entry patio with landscaped garden
- Well appointed living / dining area with separate spacious lounge
- Modern stone bench kitchen equipped with a pantry, hotplates and oven
- Superior door hardware
- Quality tiling to wet areas, tap fittings and splashback
- Large covered alfresco dining overlooking private garden

- Large master bedroom with walk-in robe and private ensuite
- Second bedroom large enough to have friends and family come and stay
- Great sized study with storage
- Ample storage
- Ceiling fans in all bedrooms
- Reverse cycle air conditioning in living / dining area
- Remote-controlled garage with direct villa access
- Flexible use of space
- 2400mm high glazed doors to alfresco dining
- 2700mm high ceilings

Disclaimer: The drawings are not to scale. Illustrations are intended to be a visual aid only and do not necessarily depict the actual dwellings including position or type. Some design and construction elements are still to be finalised and therefore may be subject to change. The detail contained in this drawing is to the best of IRT's knowledge as at 04/12/2018 and is indicative only.





## Overview

Size 186 sqm  
Bedrooms 2 + study  
Bathrooms 2  
Garage 2

## Ironbark features

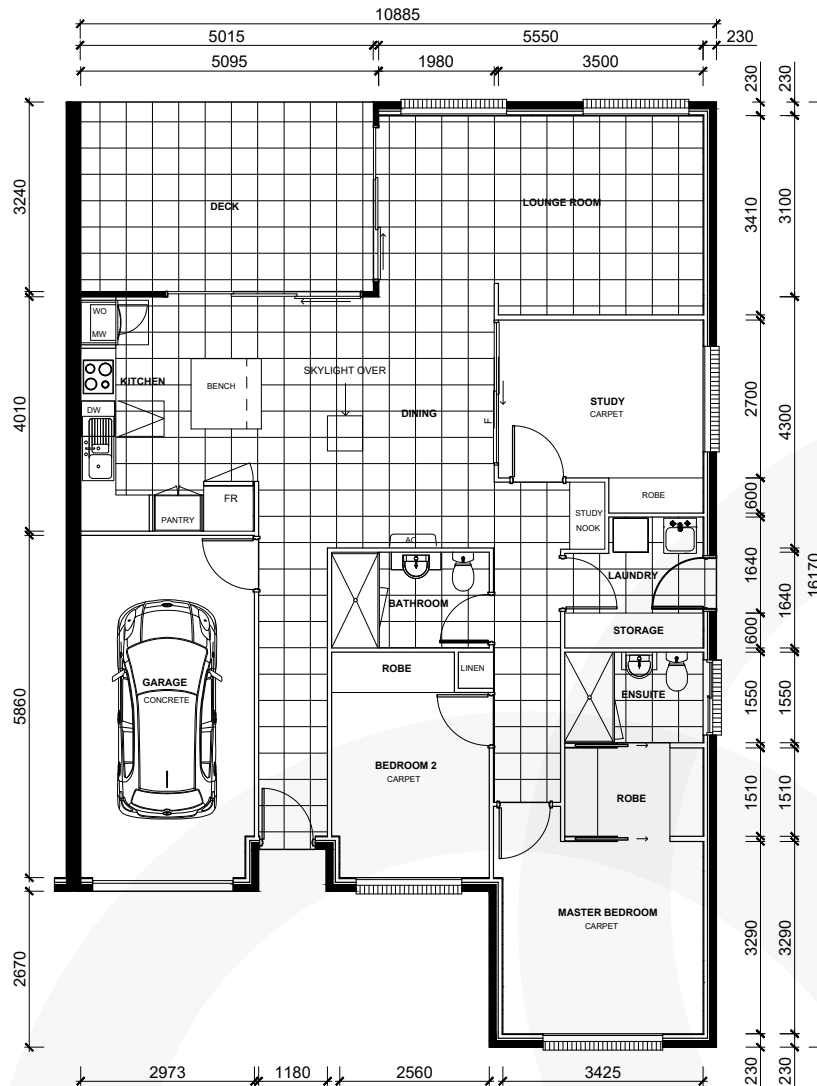
Architecturally designed with large open spaces, promoting natural ventilation and sunlight to all areas.

- Front entry patio with landscaped garden
- Well appointed living / dining area with separate spacious lounge
- Modern stone bench kitchen equipped with a pantry, hotplates and oven
- Superior door hardware
- Quality tiling to wet areas, tap fittings and splashback
- Large covered alfresco dining overlooking private garden

- Large master bedroom with walk-in robe and private ensuite
- Second bedroom large enough to have friends and family come and stay
- Great sized study with storage
- Ample storage
- Ceiling fans in all bedrooms
- Reverse cycle air conditioning in living / dining area
- Remote-controlled garage with direct villa access
- Flexible use of space
- 2400mm high glazed doors to alfresco dining
- 2700mm high ceilings.

Disclaimer: The drawings are not to scale. Illustrations are intended to be a visual aid only and do not necessarily depict the actual dwellings including position or type. Some design and construction elements are still to be finalised and therefore may be subject to change. The detail contained in this drawing is to the best of IRT's knowledge as at 04/12/2018 and is indicative only.





## Overview

Size 141 sqm  
 Bedrooms 2 + study  
 Bathrooms 2  
 Garage 1

## Tallowood features

Architecturally designed with large open spaces, promoting natural ventilation and sunlight to all areas.

- Front entry patio with landscaped garden
- Well appointed living / dining area with separate spacious lounge
- Modern stone bench kitchen equipped with a pantry, hotplates and oven
- Superior door hardware
- Quality tiling to wet areas, tap fittings and splashback
- Large covered alfresco dining overlooking private garden

- Large master bedroom with walk-in robe and private ensuite
- Second bedroom large enough to have friends and family come and stay
- Great sized study with storage
- Ample storage
- Ceiling fans in all bedrooms
- Reverse cycle air conditioning in living / dining area
- Remote-controlled garage with direct villa access
- Flexible use of space
- 2400mm high glazed doors to alfresco dining
- 2700mm high ceilings.

Disclaimer: The drawings are not to scale. Illustrations are intended to be a visual aid only and do not necessarily depict the actual dwellings including position or type. Some design and construction elements are still to be finalised and therefore may be subject to change. The detail contained in this drawing is to the best of IRT's knowledge as at 04/12/2018 and is indicative only.

