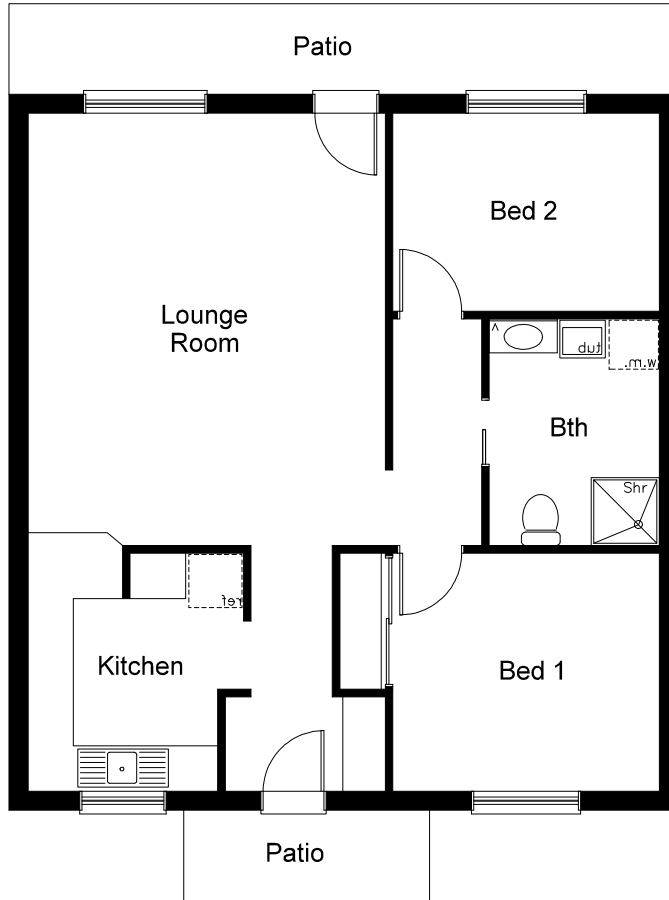


### Overview

2 Bedrooms  
1 Bathroom

### Size

Apartment	75.166sqm
Kitchen	2.60m x 3.10m
Bedroom 1	3.60m x 3.10m
Bedroom 2	3.60m x 2.60m
Bathroom	2.20m x 3.00m
Lounge Room	4.60m 5.70m

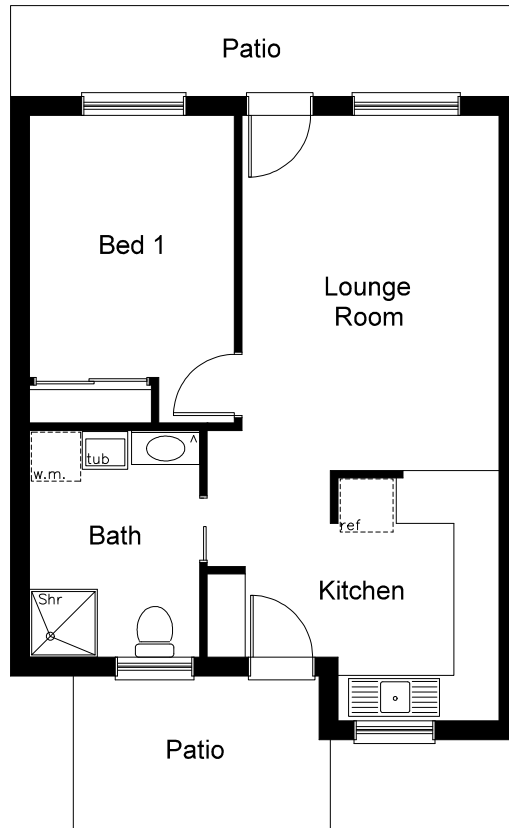


### Overview

2 Bedrooms  
1 Bathroom

### Size

Apartment	75.166sqm
Kitchen	2.60m x 3.10m
Bedroom 1	3.60m x 3.10m
Bedroom 2	3.60m x 2.60m
Bathroom	2.20m x 3.00m
Lounge Room	4.60m 5.70m



### Overview

1 Bedroom  
1 Bathroom

### Size

Apartment	45.127sqm
Kitchen	2.10m x 3.20m
Bedroom	2.70m x 4.00m
Bathroom	2.20m x 3.00m
Lounge Room	3.40m x 4.70m

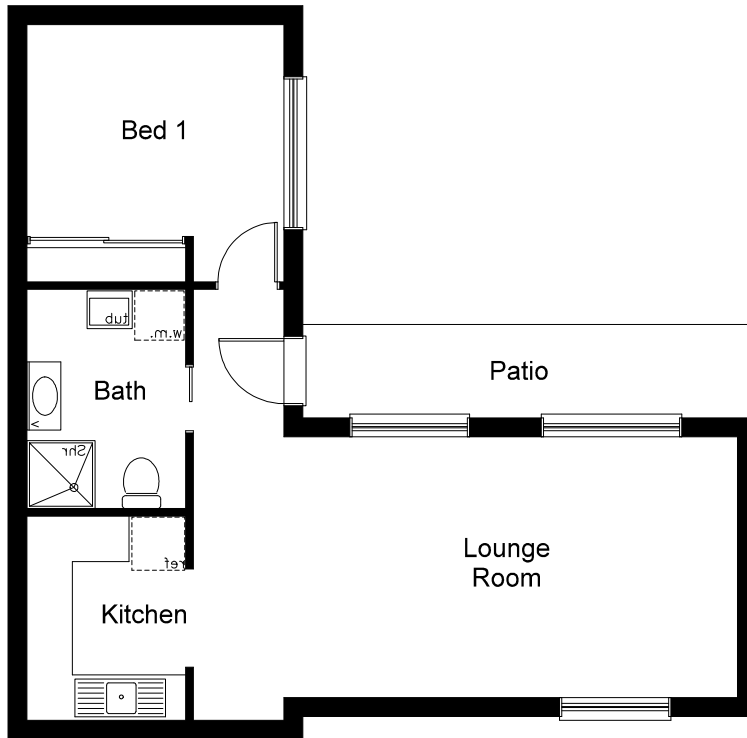


### Overview

2 Bedrooms  
1 Bathroom

### Size

Apartment	72.446sqm
Kitchen	3.10m x 2.60m
Bedroom 1	3.80m x 3.20m
Bedroom 2	2.50m x 2.50m
Bathroom	2.00m x 3.00m
Lounge Room	3.80m x 3.80m
Dining Room	3.80m x 2.20m



### Overview

1 Bedroom  
1 Bathroom

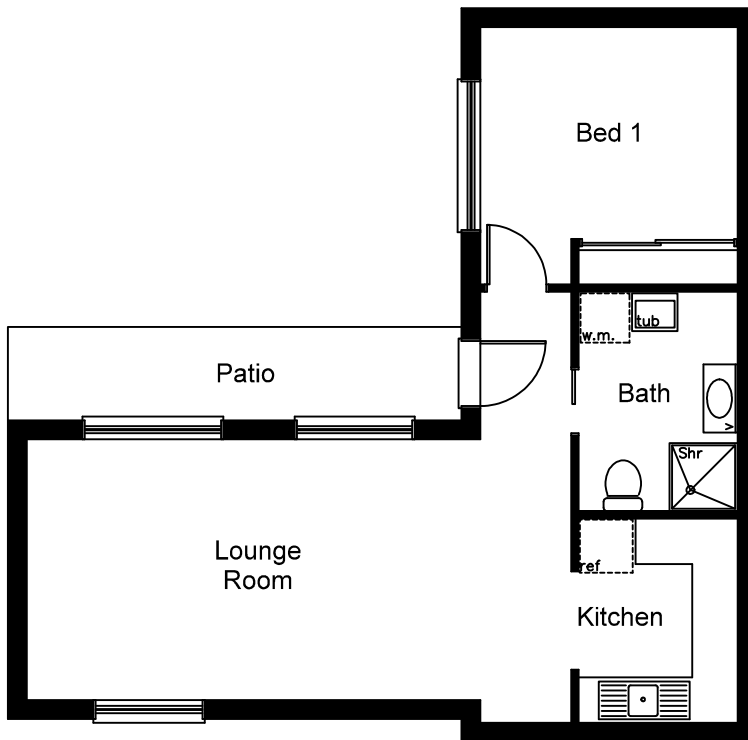
### Size

Apartment	52.464sqm
Kitchen	2.70m x 2.10m
Bedroom	3.50m x 3.50m
Bathroom	2.00m x 3.00m
Lounge Room	7.20m x 3.40m



# IRT Peakhurst

## Unit Floor Plan 6

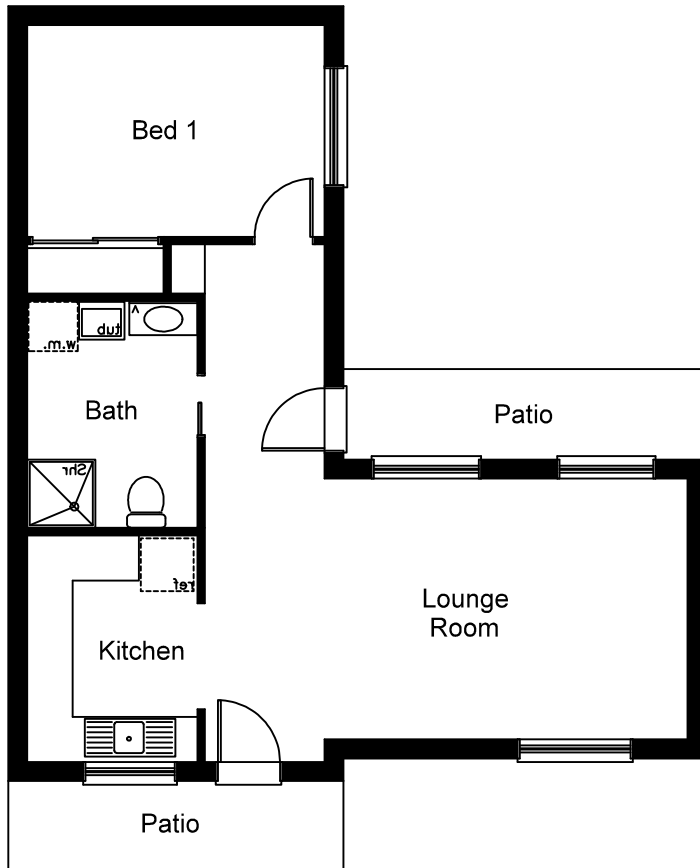


### Overview

- 1 Bedroom
- 1 Bathroom

### Size

Apartment	52.464sqm
Kitchen	2.70m x 2.10m
Bedroom	3.50m x 3.50m
Bathroom	2.00m x 3.00m
Lounge Room	7.20m x 3.40m

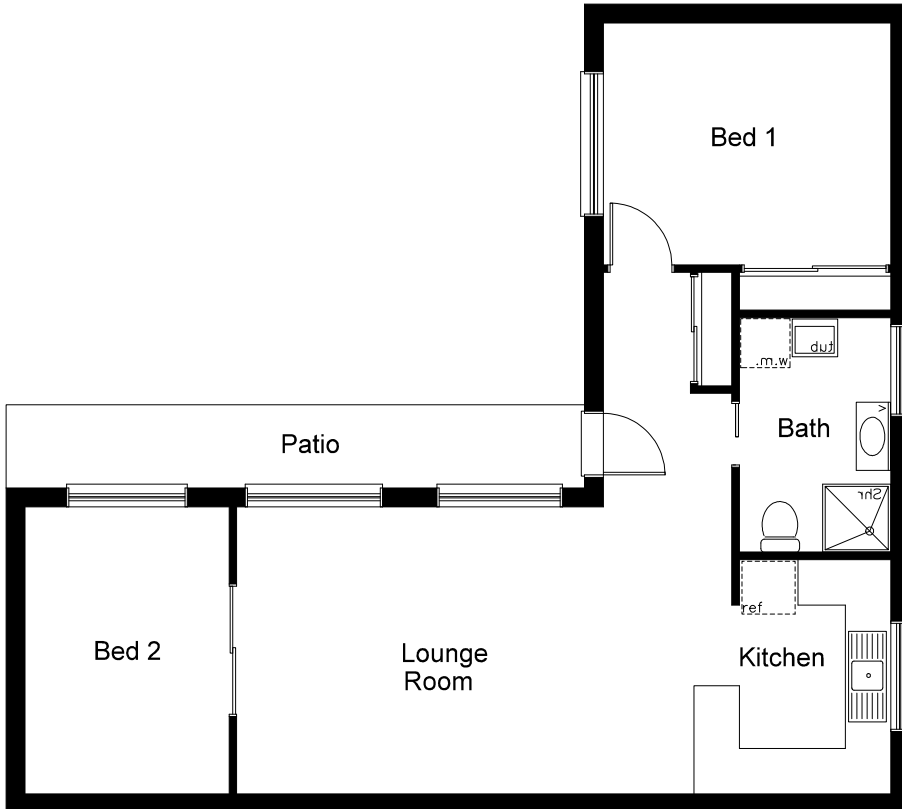


## Overview

1 Bedroom  
1 Bathroom

## Size

Apartment	55.411sqm
Kitchen	2.20m x 2.70m
Bedroom	3.90m x 2.60m
Bathroom	2.00m x 3.00m
Lounge Room	6.30m x 3.50m



### Overview

2 Bedrooms  
1 Bathroom

### Size

Apartment	78.771sqm
Kitchen	2.10m x 3.80m
Bedroom 1	3.80m x 3.20m
Bedroom 2	3.80m x 2.70m
Bathroom	2.00m x 3.00m
Lounge Room	3.80m x 5.90m